

Via Coletora - Avenida Tônico dos Santos

Luminária: 90W
Altura: 7m
Distância entre postes: 27m
Via: 7m
Canteiro central: 2,5m
Calçada: 3m
Braço: 3m

Date: 14.04.2015
Operator:

Operator
Telephone
Fax
e-Mail

Table of contents

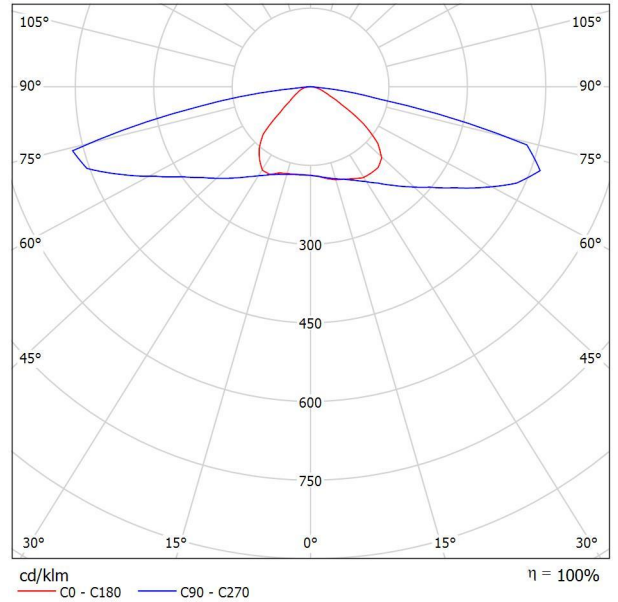
Via Coletora - Avenida Tonico dos Santos	
Project Cover	1
Table of contents	2
Luminária 90W	
Luminaire Data Sheet	3
Projeto Luminotécnico	
Planning data	4
Luminaire parts list	6
Valuation Fields	
Via	
Value Chart (Ev West)	7
Observer	
Observador 1	
Isolines (L)	8
Observador 2	
Isolines (L)	9
Via	
Value Chart (Ev West)	10
Observer	
Observador 3	
Isolines (L)	11
Observador 4	
Isolines (L)	12
Calçada	
Value Chart (Ev West)	13
Calçada	
Value Chart (Ev West)	14

Operator
Telephone
Fax
e-Mail

Luminária 90W / Luminaire Data Sheet

See our luminaire catalog for an image of the luminaire.

Luminous emittance 1:



Luminaire classification according to CIE: 100
CIE flux code: 31 65 93 100 100

Due to missing symmetry properties, no UGR table can be displayed for this luminaire.

Operator
Telephone
Fax
e-Mail

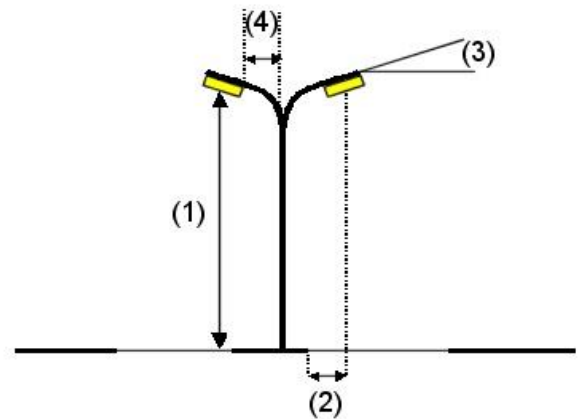
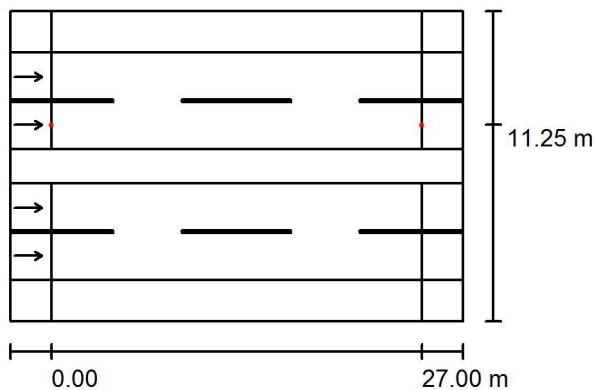
Projeto Luminotécnico / Planning data

Street Profile

Calçada	(Width: 3.000 m)
Via	(Width: 7.000 m, Number of lanes: 2, tarmac: R3, q0: 0.070)
Canteiro Central	(Width: 2.500 m, Height: 0.000 m)
Via	(Width: 7.000 m, Number of lanes: 2, tarmac: R3, q0: 0.070)
Calçada	(Width: 3.000 m)

Maintenance factor: 1.00

Luminaire Arrangements



Luminaire:	Luminária 90W
Luminous flux (Luminaire):	8387 lm
Luminous flux (Lamps):	8387 lm
Luminaire Wattage:	97.2 W
Arrangement:	on Median
Pole Distance:	27.000 m
Mounting Height (1):	7.000 m
Height:	6.900 m
Overhang (2):	1.750 m
Boom Angle (3):	0.0 °
Boom Length (4):	3.000 m

Maximum luminous intensities	
at 70°:	571 cd/klm
at 80°:	738 cd/klm
at 90°:	34 cd/klm

Any direction forming the specified angle from the downward vertical, with the luminaire installed for use.

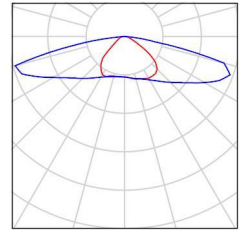
Arrangement complies with glare index class D.3.

Operator
Telephone
Fax
e-Mail

Projeto Luminotécnico / Luminaire parts list

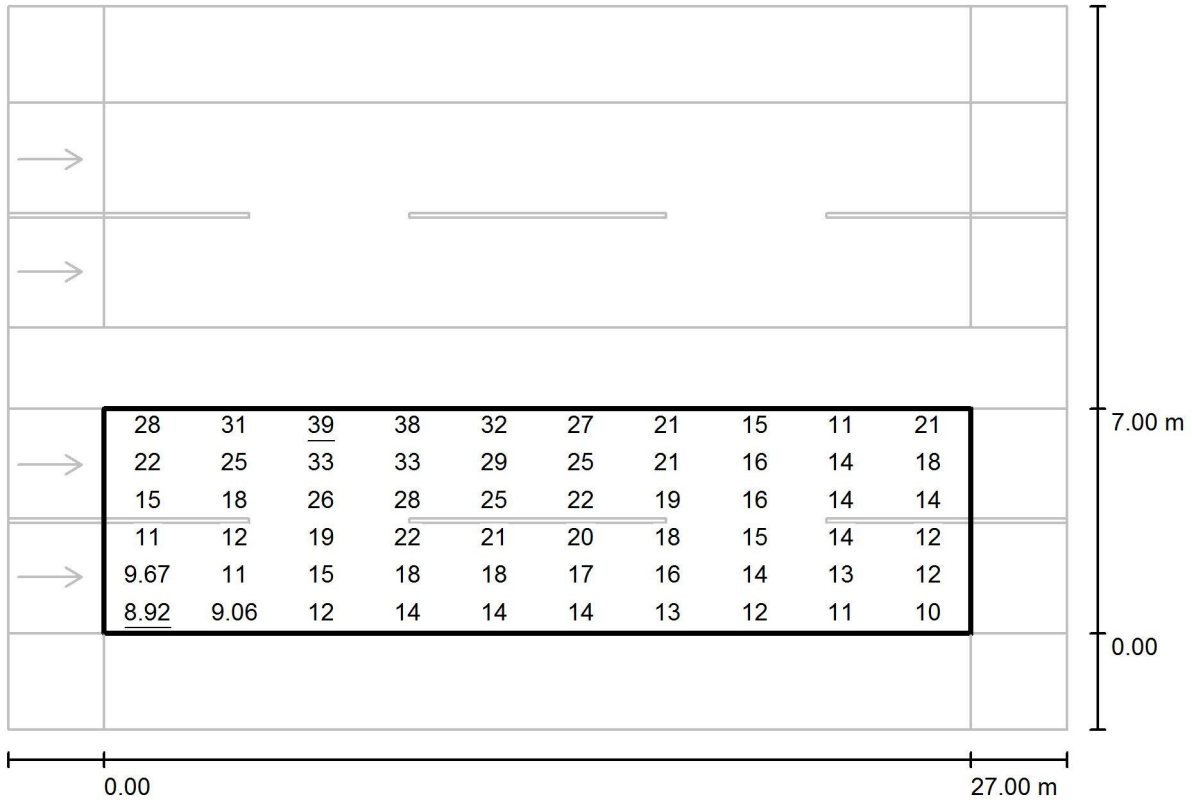
Luminária 90W
Article No.:
Luminous flux (Luminaire): 8387 lm
Luminous flux (Lamps): 8387 lm
Luminaire Wattage: 97.2 W
Luminaire classification according to CIE: 100
CIE flux code: 31 65 93 100 100
Fitting: 1 x CREE R4 (Correction Factor 1.000).

See our luminaire
catalog for an image of
the luminaire.



Operator
Telephone
Fax
e-Mail

Projeto Luminotécnico / Via / Value Chart (Ev West)



Values in Lux, Scale 1 : 236

Grid: 10 x 6 Points

E_{av} [lx]
19

E_{min} [lx]
8.92

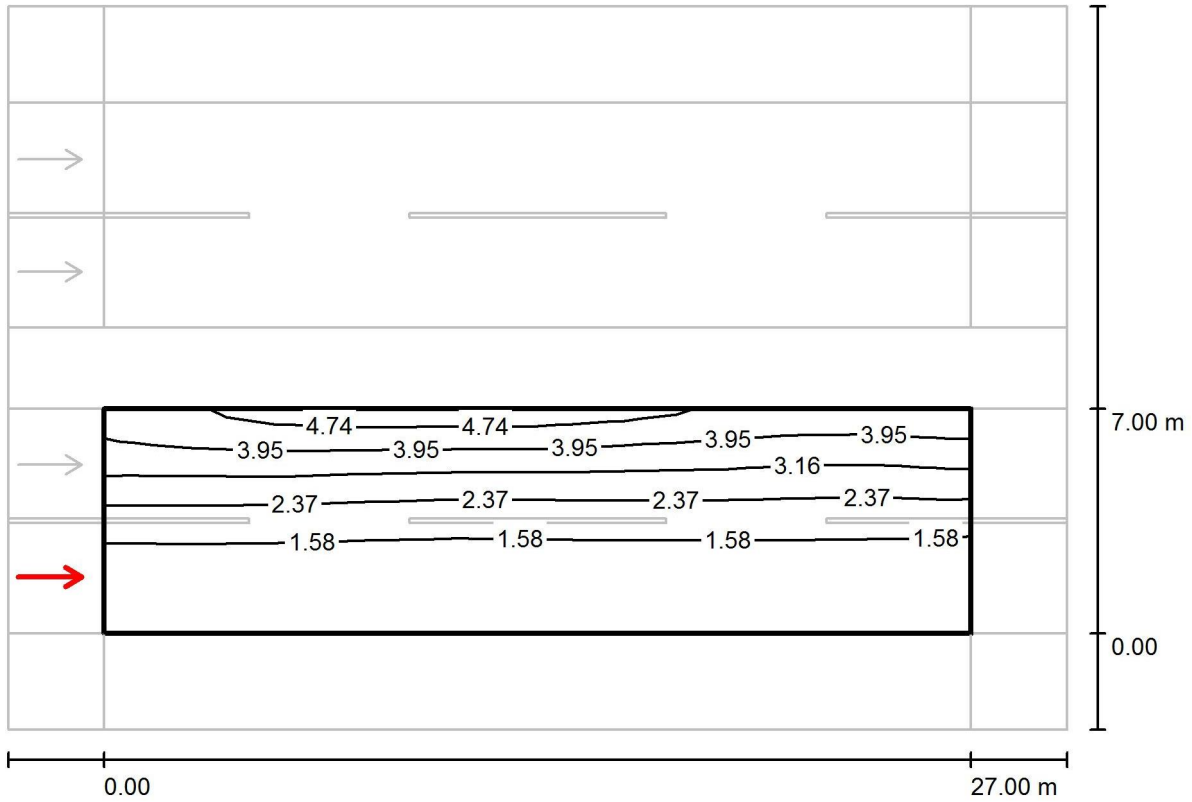
E_{max} [lx]
39

u0
0.477

E_{min} / E_{max}
0.229

Operator
Telephone
Fax
e-Mail

Projeto Luminotécnico / Via / Observador 1 / Isolines (L)



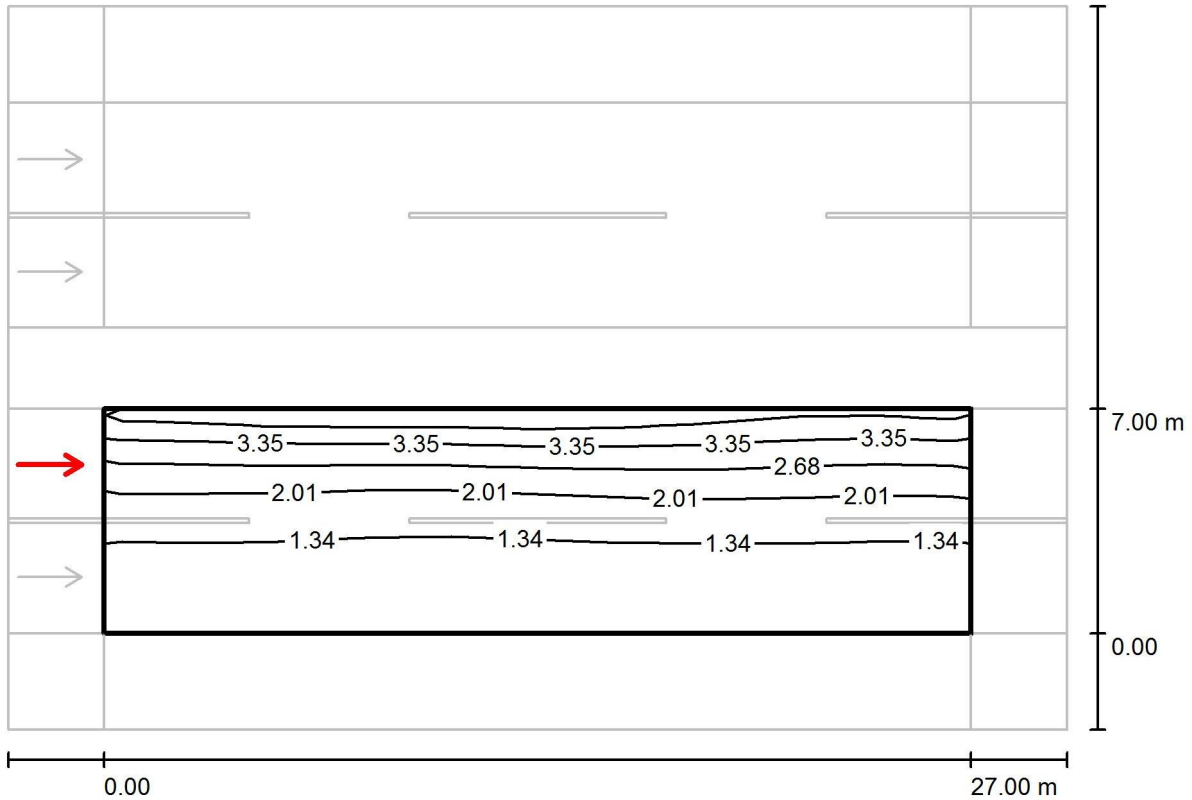
Values in Candela/m², Scale 1 : 236

Grid: 10 x 6 Points
Observer Position: (-60.000 m, 1.750 m, 1.500 m)
tarmac: R3, q0: 0.070

	L_{av} [cd/m²]	U0	UI	TI [%]
Calculated values:	2.26	0.41	0.92	10
Required values according to class ME4a:	≥ 1.00	≥ 0.40	≥ 0.70	≤ 10
Fulfilled/Not fulfilled:	✓	✓	✓	✓

Operator
Telephone
Fax
e-Mail

Projeto Luminotécnico / Via / Observador 2 / Isolines (L)



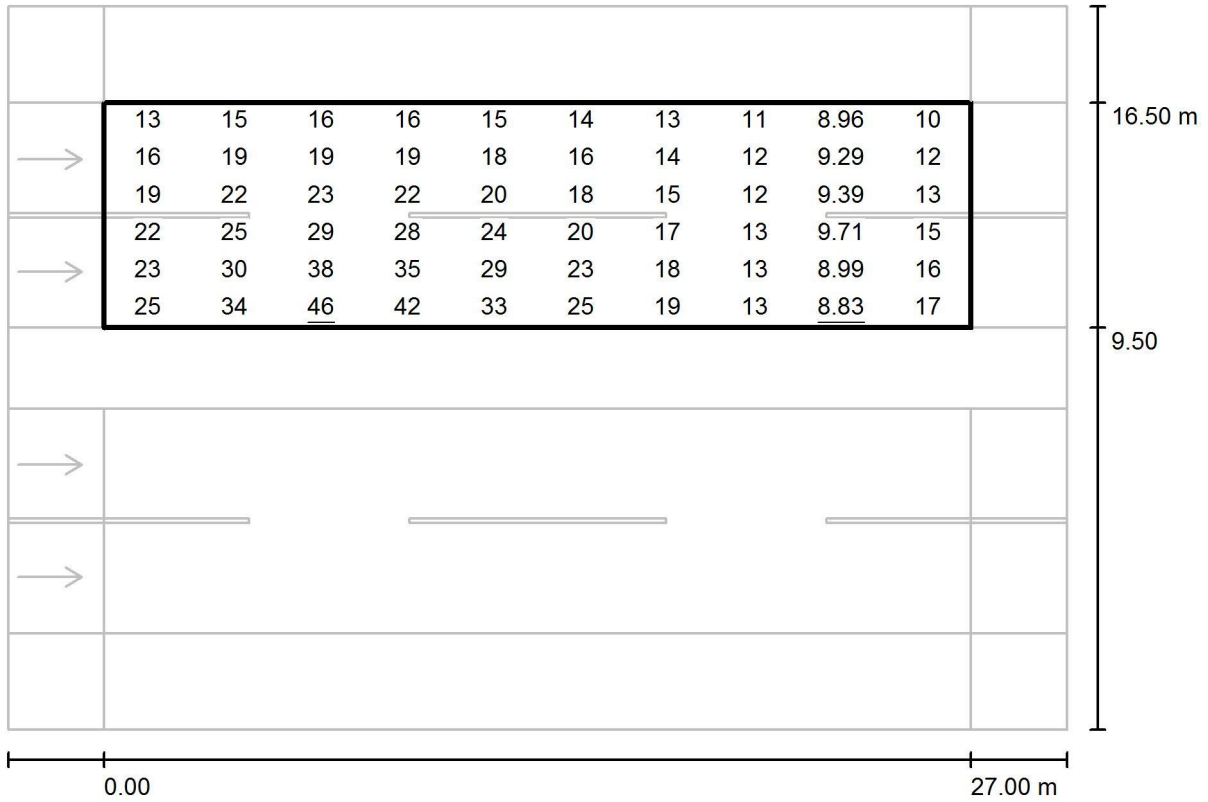
Values in Candela/m², Scale 1 : 236

Grid: 10 x 6 Points
Observer Position: (-60.000 m, 5.250 m, 1.500 m)
tarmac: R3, q0: 0.070

	L_{av} [cd/m ²]	U0	UI	TI [%]
Calculated values:	1.90	0.42	0.91	10
Required values according to class ME4a:	≥ 1.00	≥ 0.40	≥ 0.70	≤ 10
Fulfilled/Not fulfilled:	✓	✓	✓	✓

Operator
Telephone
Fax
e-Mail

Projeto Luminotécnico / Via / Value Chart (Ev West)



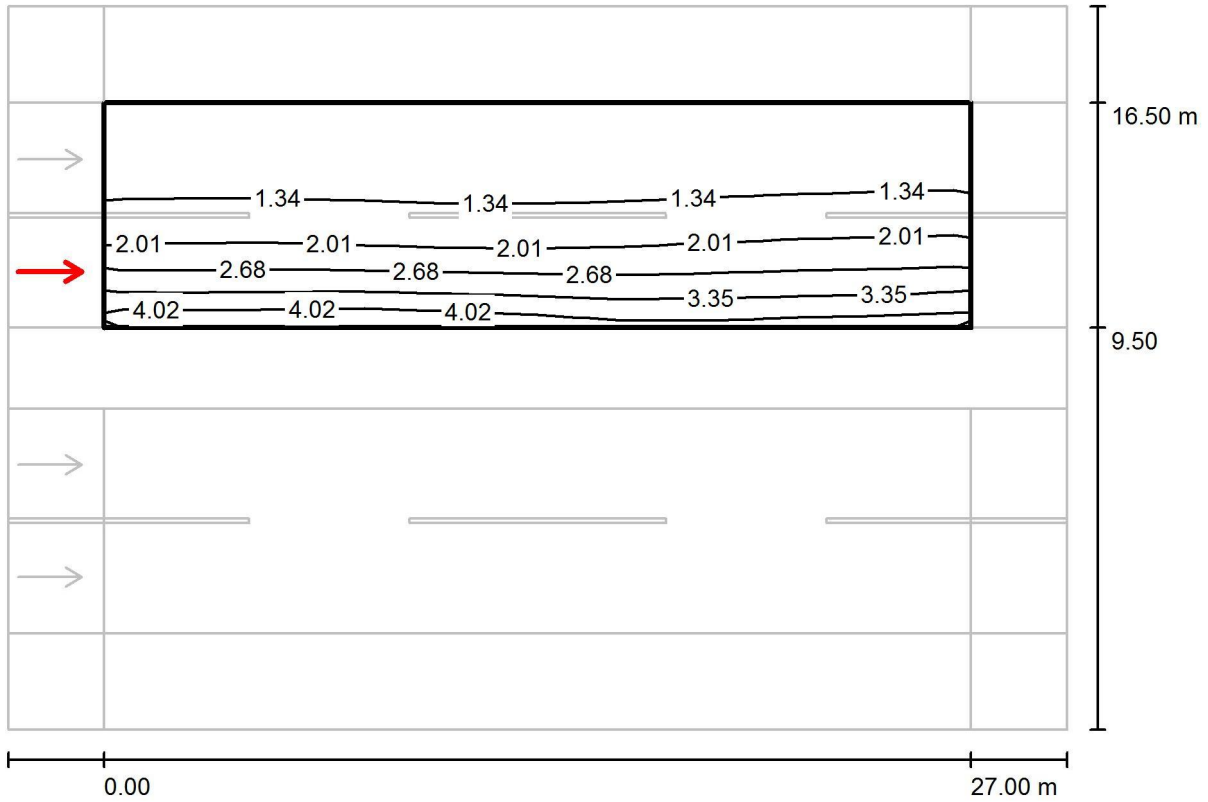
Values in Lux, Scale 1 : 236

Grid: 10 x 6 Points

E_{av} [lx]	E_{min} [lx]	E_{max} [lx]	u0	E_{min} / E_{max}
19	8.83	46	0.456	0.194

Operator
Telephone
Fax
e-Mail

Projeto Luminotécnico / Via / Observador 3 / Isolines (L)



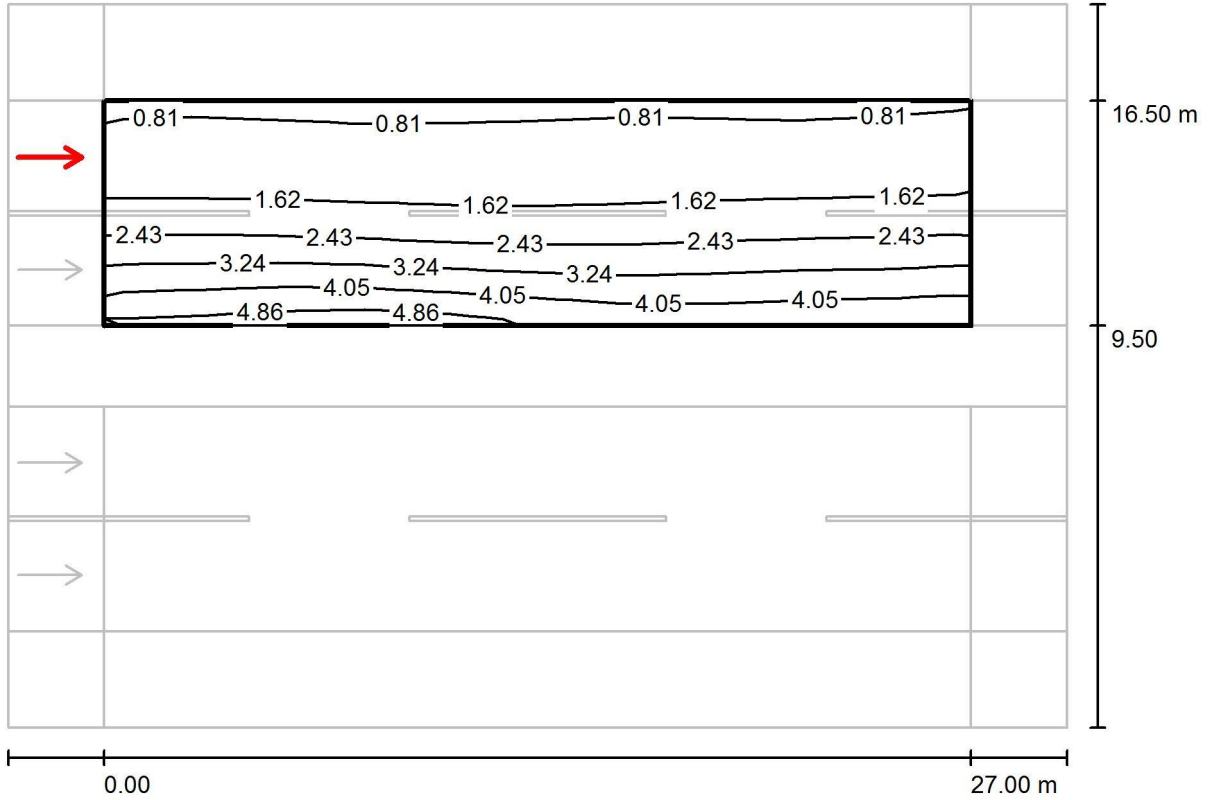
Values in Candela/m², Scale 1 : 236

Grid: 10 x 6 Points
Observer Position: (-60.000 m, 11.250 m, 1.500 m)
tarmac: R3, q0: 0.070

	L_{av} [cd/m ²]	U0	UI	TI [%]
Calculated values:	1.87	0.41	0.93	10
Required values according to class ME4a:	≥ 1.00	≥ 0.40	≥ 0.70	≤ 10
Fulfilled/Not fulfilled:	✓	✓	✓	✓

Operator
Telephone
Fax
e-Mail

Projeto Luminotécnico / Via / Observador 4 / Isolines (L)



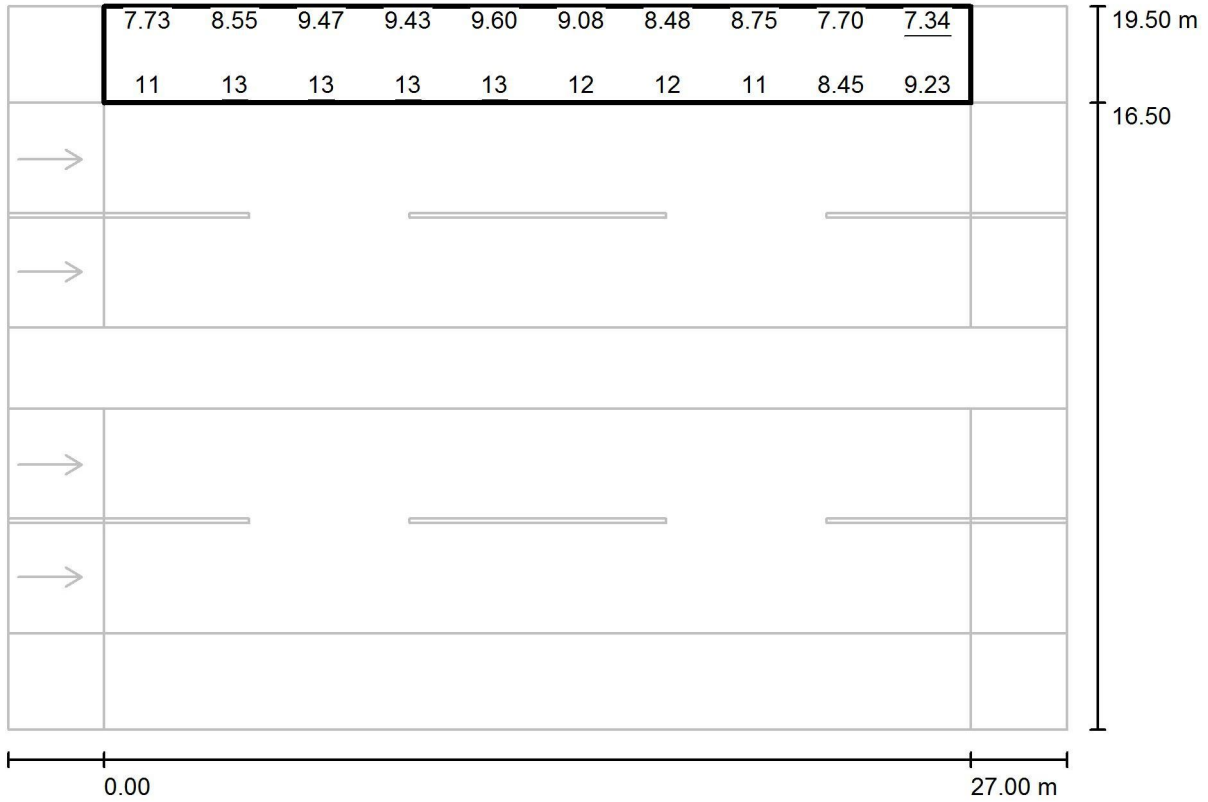
Values in Candela/m², Scale 1 : 236

Grid: 10 x 6 Points
Observer Position: (-60.000 m, 14.750 m, 1.500 m)
tarmac: R3, q0: 0.070

	L_{av} [cd/m ²]	U0	UI	TI [%]
Calculated values:	2.19	0.40	0.93	10
Required values according to class ME4a:	≥ 1.00	≥ 0.40	≥ 0.70	≤ 10
Fulfilled/Not fulfilled:	✓	✓	✓	✓

Operator
Telephone
Fax
e-Mail

Projeto Luminotécnico / Calçada / Value Chart (Ev West)



Values in Lux, Scale 1 : 236

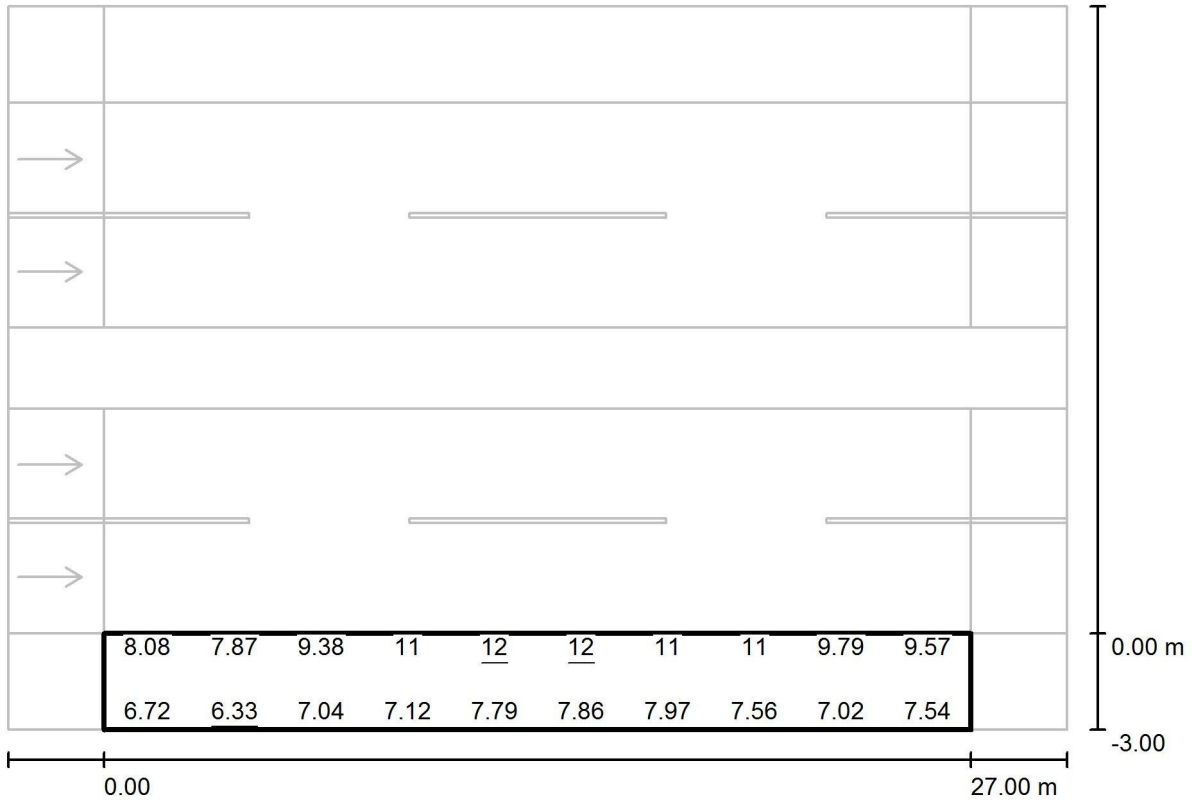
Not all calculated values could be displayed.

Grid: 10 x 3 Points

E_{av} [lx]	E_{min} [lx]	E_{max} [lx]	u0	E_{min} / E_{max}
10	7.34	13	0.726	0.544

Operator
Telephone
Fax
e-Mail

Projeto Luminotécnico / Calçada / Value Chart (Ev West)



Values in Lux, Scale 1 : 236

Not all calculated values could be displayed.

Grid: 10 x 3 Points

E_{av} [lx]	E_{min} [lx]	E_{max} [lx]	u0	E_{min} / E_{max}
8.66	6.33	12	0.731	0.538